



Rusthall Mansions, London, W4  
Guide Price £795,000

**WHITMAN & CO.**  
SALES · LETTINGS · COMMERCIAL



A superb ground-floor mansion flat with bright, well-proportioned rooms in a great location a few minutes walk from Chiswick High Road and both Turnham Green and Chiswick Park tube stations. The accommodation comprises a lovely 18'1 south-facing reception room with bay window, marble fireplace and built-in cabinetry, a large double bedroom with extensive built-in wardrobes, a second double bedroom, a fully fitted kitchen/breakfast room with a door leading directly onto a secluded communal garden, a bathroom and entrance hallway. Rusthall Mansions is an attractive red brick block set back from the road with Acton Green directly opposite. Chiswick High Road's shops, cafes and restaurants are less than a 5-minute walk away. Transport links include the two tube stations, local bus routes and the A4/M4 for routes in and out of London. No onward chain.



# Rusthall Mansions, W4

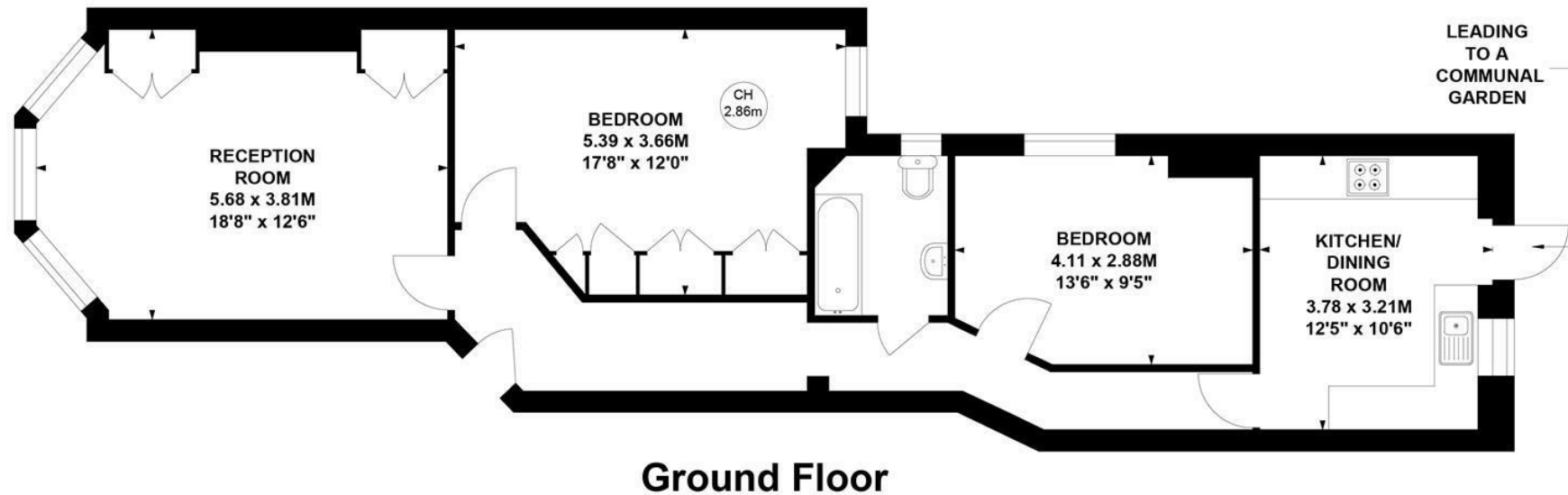
Approximate Gross Internal Area

80.09 sq m / 862 sq ft



Key :

CH - Ceiling Height



Not to scale, for guidance only and must not be relied upon as a statement of fact.  
All measurements and areas are approximate only

- Ground floor mansion flat
- Two large double bedrooms
- Communal gardens

- 18'1 South facing reception room
- Kitchen/breakfast room
- No onward chain

Tenure - Leasehold + share of freehold  
Lease Length - 945 Years remaining  
Ground rent - Peppercorn  
Service Charge - £4,500 pa  
Local Authority - Ealing  
Council Tax - Band E

